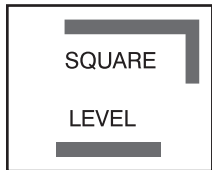


WINDOW STYLES AND PROFILES

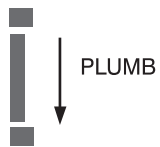
SUGGESTED INSTALLATION INSTRUCTIONS

- A) Before removing existing window, measure the opening to ensure new window will have a proper fit.
 - For new openings allow a minimum 1/2" clearance around perimeter.
 - When window will be installed in existing frame (insert) allow 1/4" clearance around perimeter.
- B) Locate the style of window your installing on the adjacent diagrams to the right of this sheet. Pre-drill a pilot hole in areas indicated on drawing using a 1/16" bit. Then drill a 3/8" counterbore hole through the first wall only to accommodate the screw head. To anchor properly use a # 8 panhead screw of appropriate length to penetrate a minimum of 1" into the jack studs or box frame.
- C) Make sure the window is in the proper upright position. This sticker is located to the interior of the window.
- D) Install window into opening shimming in areas as indicated in diagrams. Make sure window is square, level and plumb.



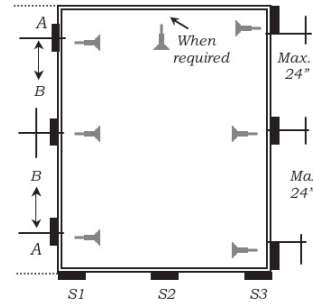
SQUARE: Opposite corners of window frame so that components will operate properly

LEVEL: No water pockets will be created in the frame of operating windows thus preventing water infiltration to the building interior.

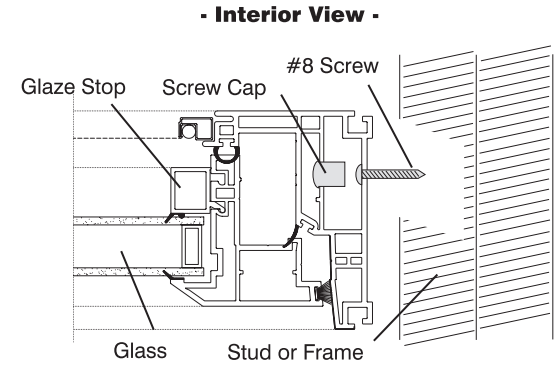


PLUMB: When the window is installed plumb, the design's sill slope is maintained which allows water shed.

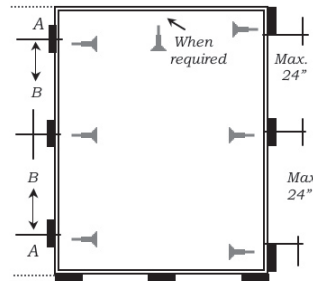
- E) Ensure window is operating and locking properly.
- F) Insulate perimeter of window with batt or foam insulation. **DO NOT OVER PACK** the insulation; this could cause the frame to bow or twist. If using foam insulation, make sure to follow the manufacturers instructions for proper application and expansion allowance
- G) All exterior and interior gaps should be caulked with a compatible sealant.



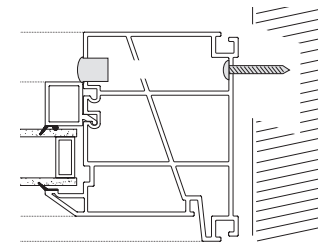
CASEMENT/AWNING



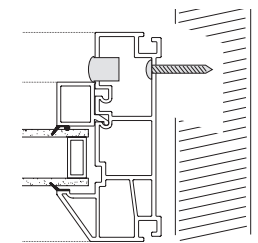
All profile diagrams are from a top view



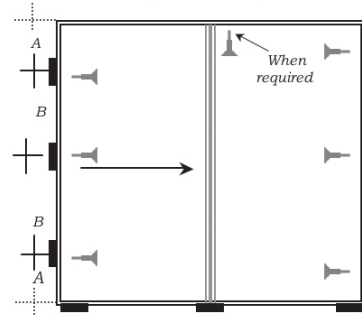
PICTURE/FIXED



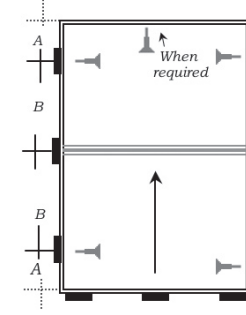
FIXED (HIGH PROFILE)



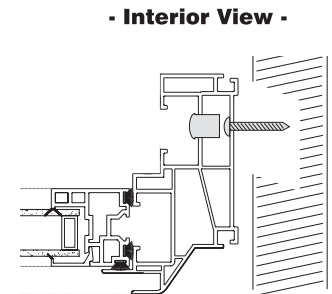
PICTURE (LOW PROFILE)



HORIZONTAL SLIDERS



VERTICAL SLIDERS



LEGEND

A = Minimum 8"
 B = Maximum 24"

➤ = Screws
 Do not screw into bottom of window frame.

■ = Shims
 Bottom Shim Placement:
 28" or less = 2 Shims
 64" or less = 3 Shims
 98" or less = 5 Shims

Thank you for purchasing a Seymour Window product.
MADE IN CANADA

SEYMOUR

WINDOWS & DOORS



www.seymourwindows.ca